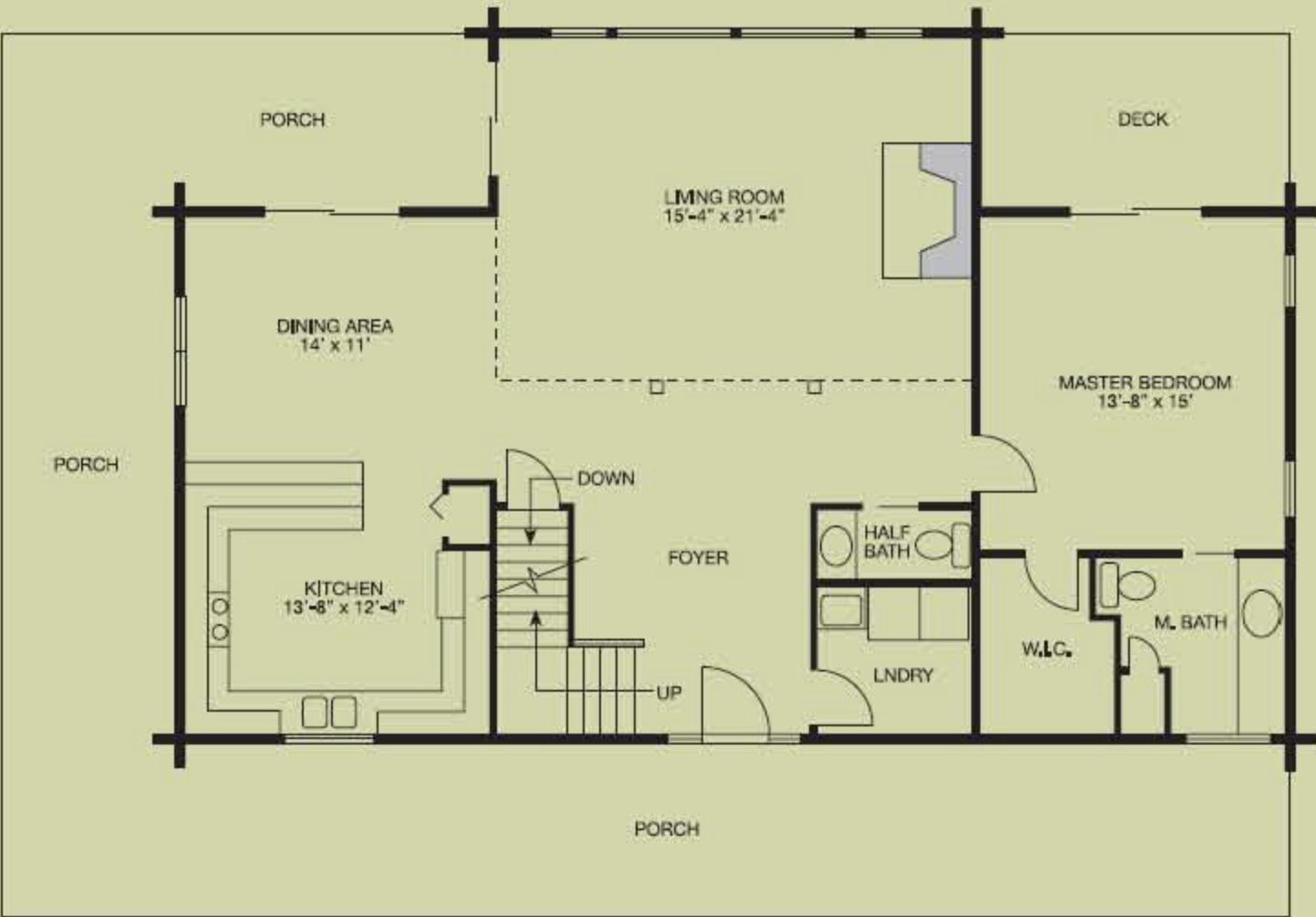




Medina

2,438 square feet, 24' x 50' with 8' x 22' offset



Need a lot of space for the family? Then consider the Medina home design. Offering two bedrooms, loft, and full bath upstairs – you'll have plenty of room. The master suite on the first floor leads you to a secluded deck. The large living room with fireplace has a vaulted ceiling with "view-catching" windows! A wrap-around porch completes the picture of this 2,438-square-foot home.