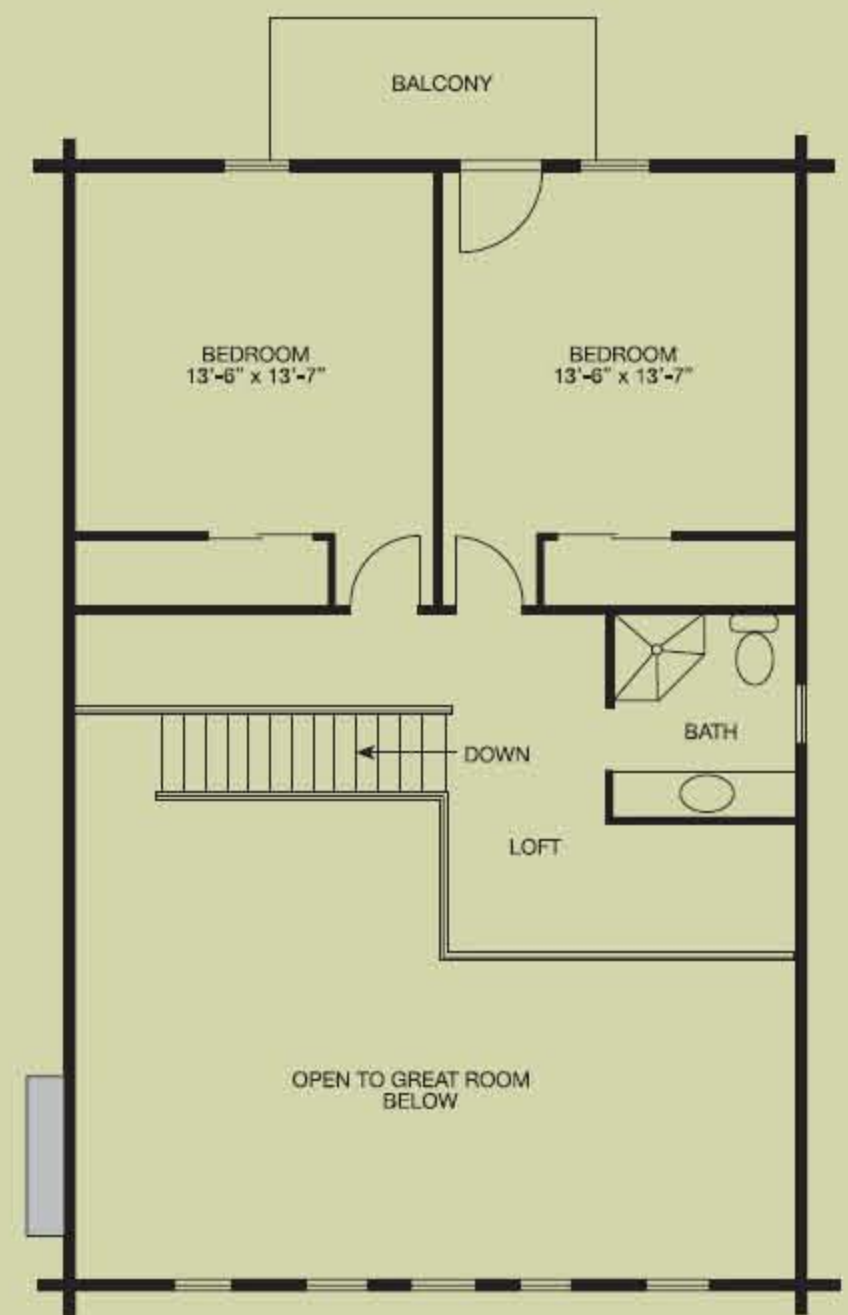
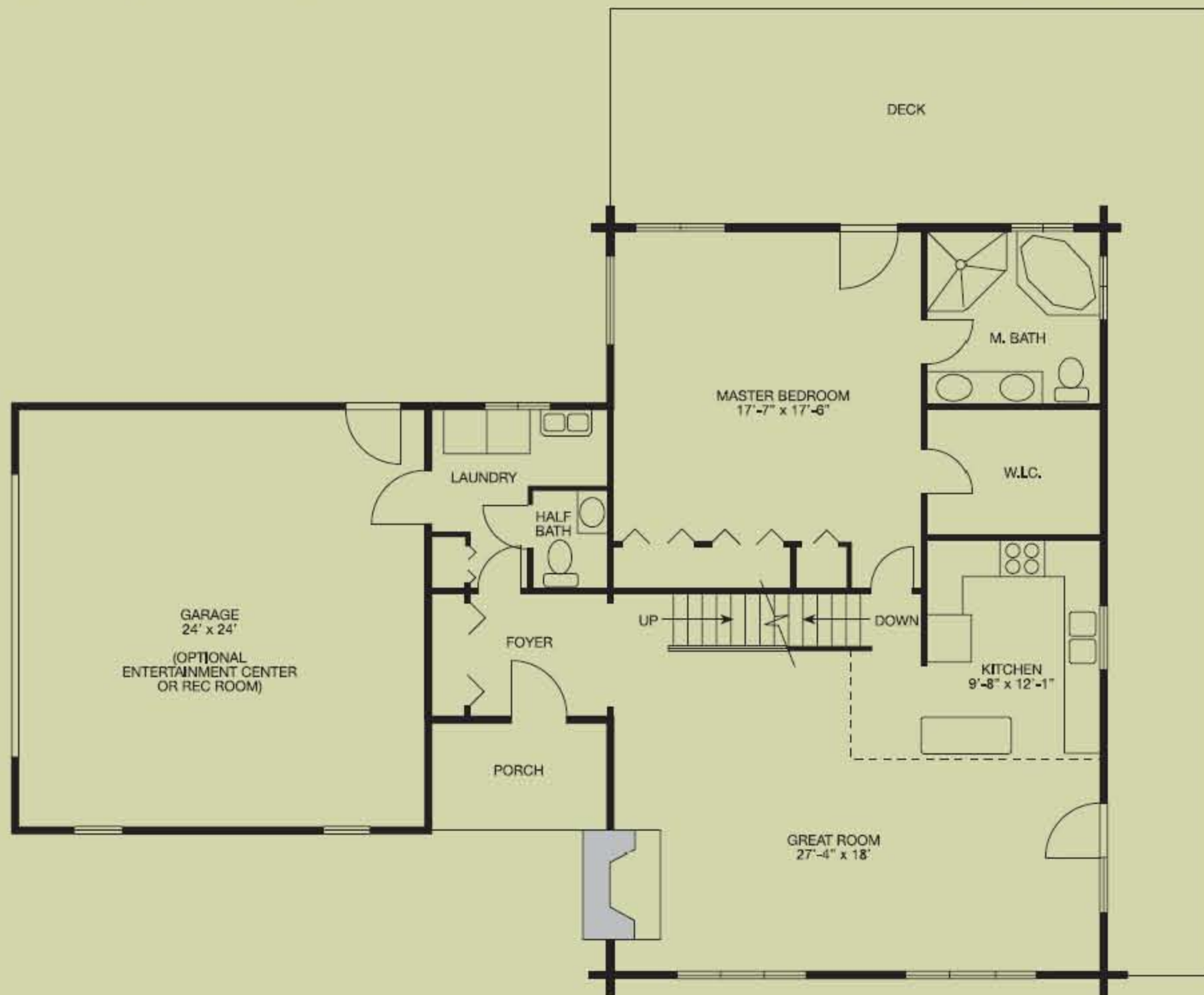




2,056 square feet, 28' x 42' with 10' x 18' offset and 24' x 24' garage



A great room with vaulted ceiling and blazing fireplace highlight the Bayside design. A spacious master bedroom (with walk-in closet and bath) overlooks a large backyard deck. With the two bedrooms and bath tucked away upstairs, and the option for an entertainment/rec room off the foyer – this 2,056-square-foot home is ideal for the active family.

